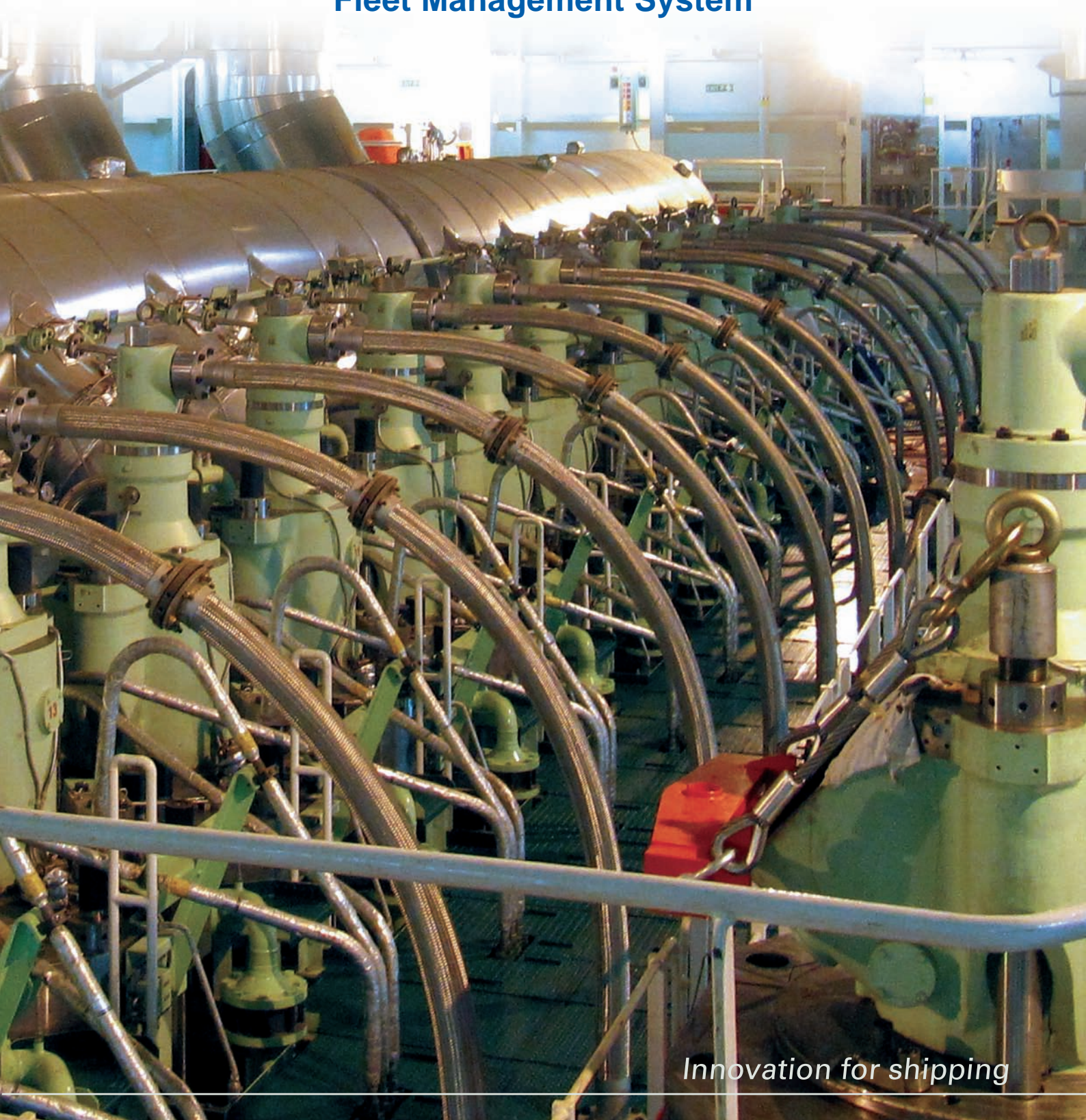


# *Bluefleet*

## Fleet Management System

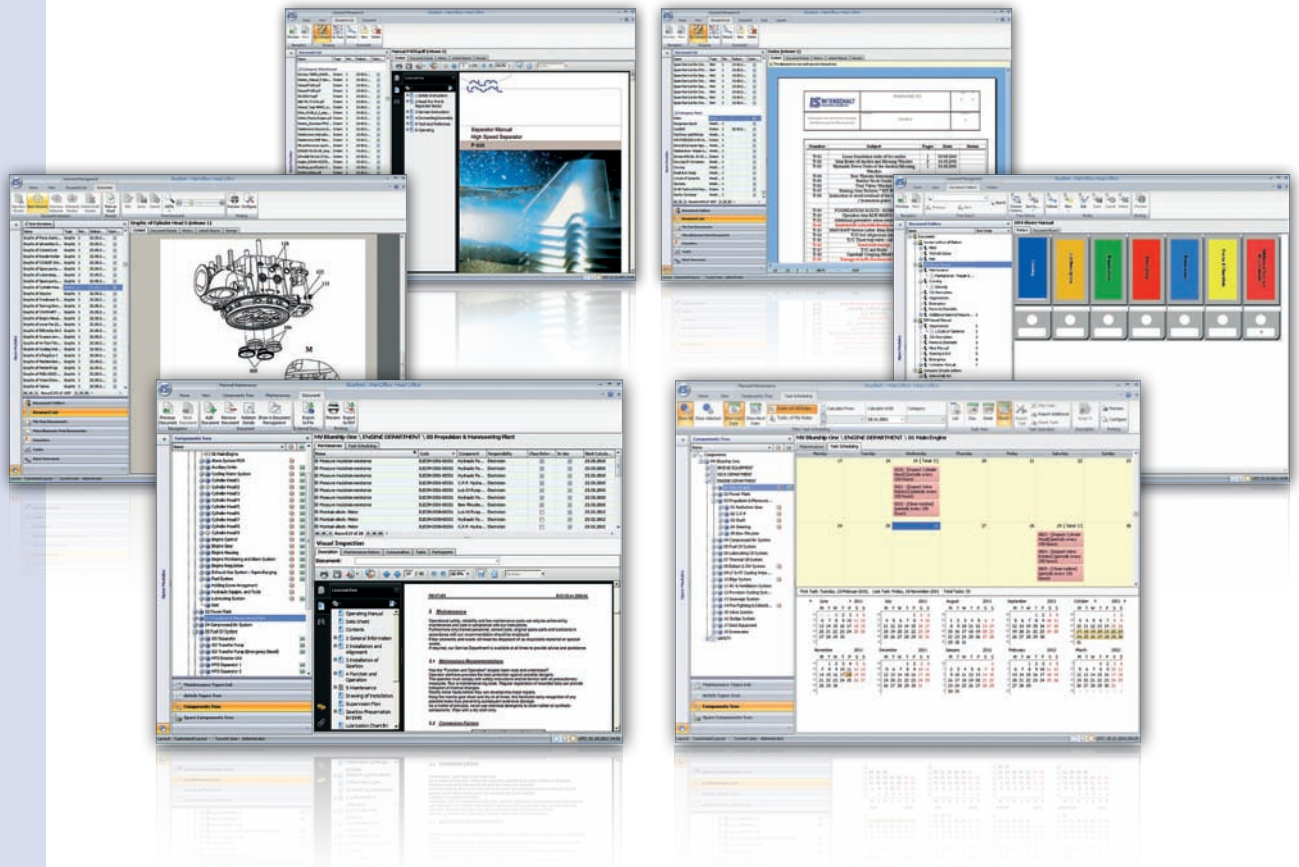


# seacos Fleet Management

**Bluefleet** combines experiences from thousands of implementations of Fleet Management Systems with the latest development platforms and technologies. Due to the modular design, the system can be implemented in various configurations. The replication feature allows the shipping company an online overview of the current situation on board.

## Advantages

- Modular structure → tailor-made pricing and payment terms
- Comfortable setup and administration → minimized system maintenance
- Intuitive user interface → fast acceptance of users
- Report generator → standard and individual reports on demand
- Computer based training (CBT) → simplified training
- Easy import of existing data → saving time
- Multi conditions → optimized task planing



## Significant technical features

- Common MS SQL database for the entire fleet
- Automatic/manual data transfer adjustable by size and time
- Integrated report generator
- Support of MS server 2005 and higher
- 3rd party ERP interface available

## User Interface

- Look & feel of Microsoft Office suite
- Individual dash board
- Configurable to individual requirements
- Multi language support
- Role based user management
- Temporary access rights

## Key Modules



## Core System

User-, Address-, Document-, Formular Management (Info Path), Report Generator.

## Standard Modules

### Planned Maintenance

Administration of components, maintenances, tasks, counters and certificates.

### Purchase

Baskets, requisitions, request for quotations and purchase orders onboard and in the office.

### Stock Control

Several stores on board, article- and spare part management from catalogues.

### Budgeting

Additional functionality in the purchase system to administrate the cost centres of the vessels.

### ISM Documents

Administrates the ISM related documents of the ship in electronic form.

### Risk Assessment

Risk management on board by defining processes, tasks, risks and resulting counteractions.

## Enhanced Modules

### Condition Based Maintenance

Calculation of technical status of several devices, maintenance tasks from wear and tear.

### Dockyard Management

Various maintenance and repair tasks before and during the ship is in dockyard.

### ERP Interface

Interface to transfer article and purchase order information.

### Drill Management

Comprehensive overview about drill scheduling and executions.

### Cloud Application

Hosting of the application and administration of data transfer.

### Vessel Monitoring

Collect relevant ship data onboard vessels, transfer ashore and provide to several users.

**INTERSCHALT maritime systems AG**

Wilhelmstrasse 7-9, 24937 Flensburg, GERMANY

phone: +49 (0)461 43041-0 • fax: +49 (0)461 43041-499

email: [sales@interschalt.de](mailto:sales@interschalt.de) • web: [www.interschalt.de](http://www.interschalt.de)

