

MACS3

Cargo Management System General Overview



seacos Cargo Management

Stability calculation

Longitudinal strength calculation

Customizable user interface

User-defined warning points

Visualization of various vessel views

Automatic wind pressure calculation

Automatic ballast tank optimization

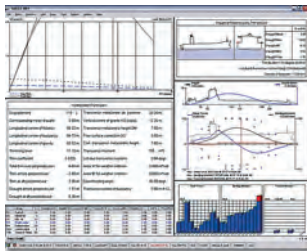
Modular extension

Screen and print reports

Loading Computer System MACS3

More than 4,900 vessels worldwide have been equipped with our MACS3 loading computer as well as a corresponding number of office systems at the shipping companies.

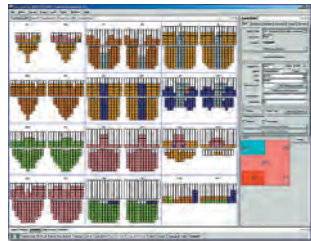
The software has been approved and is certified for on-board use by all major classification societies. Our product range offers solutions for all types of vessels.



Basic Program MACS3.net

Stability and strength calculations, covering all pertinent international regulations. For all types of vessels: container, tanker, bulk carrier, general cargo, RoRo, passenger. Approved by leading classification societies.

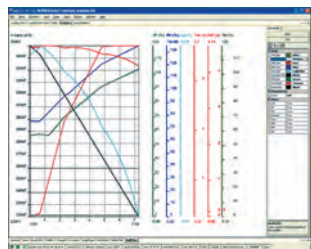
According to type of vessel



BELCO Container Management enhances the MACS3 loading computer with container management features convenient to handle. Containers can be colored according to a variety of criteria, e.g. by port of discharge. The longitudinal section shows containers, tanks and visibility lines. A special check points out all critical conditions at one glance. It shows a 3D visualization of the ship with all its cargo.



MIXCARGO for General Cargo manages all kinds of cargo: containers, trailers, single parts and homogeneous surface cargo. Allows polygon-shaped cargo areas. Loading is done interactively. Items can easily be rearranged.



LOADMAN for Bulk Carriers and Tankers helps to create safe loading and unloading sequences. The ship's stability and strength during the whole process, including ballast operations, are shown in a time frame. Creates a loading/unloading plan as required by IMO Resolution A.862 (20).

Selected add-ons

SEALASH including Lash Optimization lashes containers properly. Forces are calculated according to GL, DNV, BV, ABS and LR. Generates various reports, e.g. inventory list, lash forces by bay, stack and tier.

CRANE OPERATION simulates the handling of on-board cranes. It helps to plan the loading/unloading of containers and heavy items, and then to safely execute the operation.

BULKSTRENGTH calculates the longitudinal strength in flooded conditions according to IACS requirements UR S17 for bulk carriers with the notation BC-A and BC-B.

DASTYMAN Damage Stability Calculation calculates damage stability based on the hull form and inner structure of the ship.

DAGO for Dangerous Goods - All types of vessels

DAGO I checks if the stowage and segregation requirements of the latest IMDG/ BC/ IBC-Code match. Includes the IMDG database with all the relevant information from the code and the Emergency Schedules (EmS).

DAGO II adds fire-fighting and safety plans.

DAGO III contains the complete Medical First Aid Guide (MFAG).

TANK ONLINE transfers tank volumes or levels into MACS3. It is available for all major on-board measurement systems, connecting to over 25 different makers.

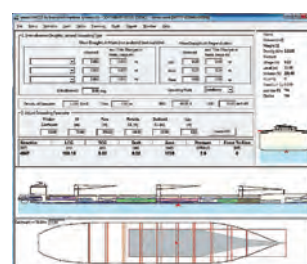
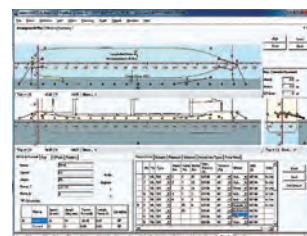
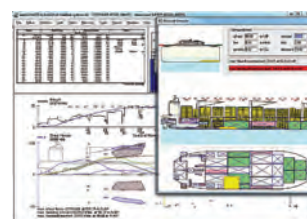
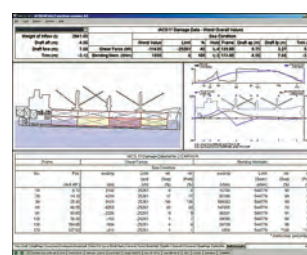
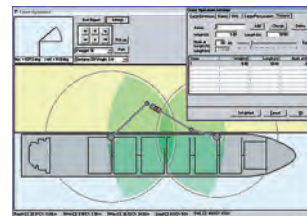
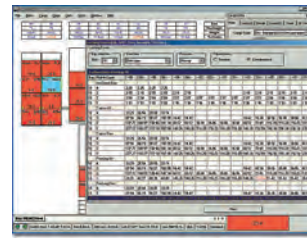
BALLASTMAN Ballast Water Exchange Management manages the ballast water exchange in accordance with IMO Res. A.868 (20). It also creates the Ballast Water Reporting Form.

New

RESIDUAL STRENGTH is a program for calculation of residual strength of the damaged ship. After input of location and extend of the hull damage the residual strength is calculated.

MOORING plans mooring on customizable pier including vessels fairleads, winches and mooring line types.

GROUNDING / UNGROUNDING STRENGTH calculates the effect of grounding, considering three different situations: rock, two rocks or sandbank.



INTERSCHALT maritime systems AG

Wilhelmstrasse 7-9, 24937 Flensburg, GERMANY

phone: +49 (0)461 43041-0 • fax: +49 (0)461 43041-499

email: sales@interschalt.de • web: www.interschalt.de

