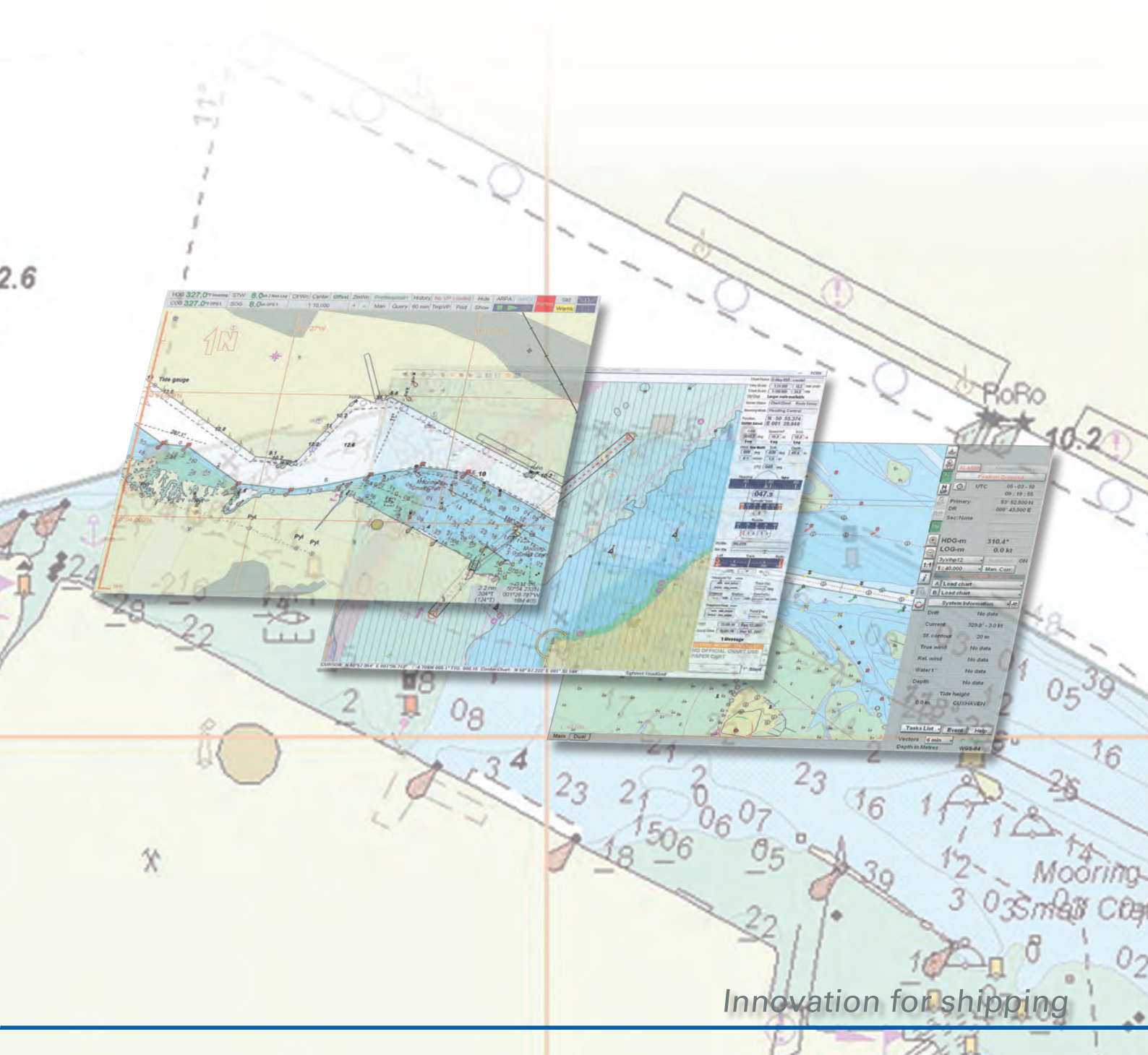


Maritime Education & Training

ECDIS - type specific training



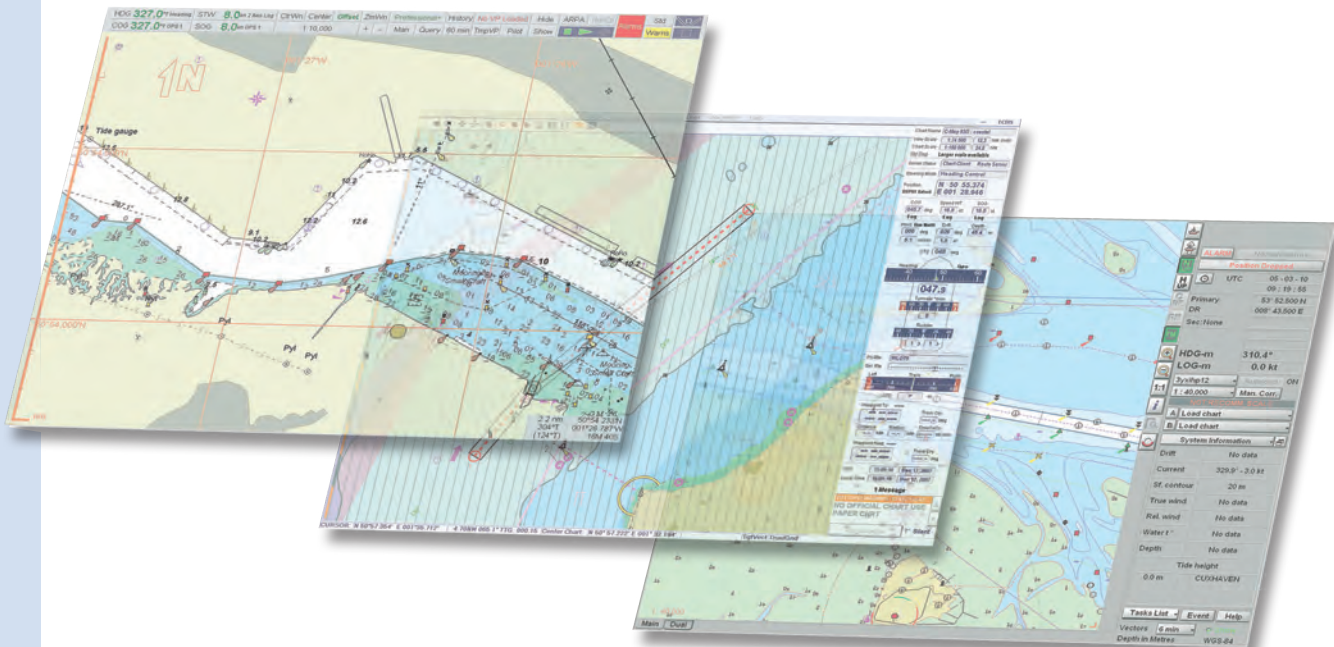
The screenshots display the ECDIS interface, showing a nautical chart with a red track, various navigational symbols, and a data panel on the right. The data panel includes information such as 'HDC-m 310.4', 'LOG-m 0.0 kt', 'DYNPLOT', 'Man Corr', 'Lead chart', 'System Information', 'Current 328° -3.0 kt', 'St. current 20 m', 'True wind', 'Rel. wind', 'Water 1', 'Depth', 'Tide height', 'Vectors 2 min', and 'Depth in Meters 1000.0'. The interface also shows a 'Message' box and a 'Pass List' section.

Mandatory ECDIS carriage requirements

During the 85th session of IMO's Maritime Safety Committee (MSC) in 2009 the proposal to declare ECDIS mandatory for the carriage on SOLAS vessels from 2012 was approved. Ships engaged on international voyages shall be fitted with an Electronic Chart Display and Information System (ECDIS) as following:

Vessel type	Size (gross tonnage)	New buildings	Existing vessels
Passenger	> 500	1 July 2012	not later than first survey on or after 1 July 2014
Tankers	> 3,000	1 July 2012	not later than first survey on or after 1 July 2015
Cargo Ships; other than tankers	> 50,000	1 July 2013	not later than first survey on or after 1 July 2016
	> 20,000 (new buildings)	1 July 2013	not later than first survey on or after 1 July 2017
	> 20,000 < 50,000		
	> 10,000 (new buildings)	1 July 2013	not later than first survey on or after 1 July 2018
	> 10,000 < 20,000		
	> 3,000 < 10,000	1 July 2014	no retrofit requirements for vessels less than 10,000 gross tonnage

Different administrations may exempt ships from the application of these requirements when such ships will be taken out of service within two years after the implementation date listed above.



The INTERSCHALT ECDIS training certificate

With the experience of more than 100 ECDIS training courses for pilots, nautical officers, captains and shore based personnel involving more than 800 participants during the last two years the INTERSCHALT Maritime Education and Training center (MET) offers an unique platform to conduct high qualified trainings in respect of the mandatory ECDIS implementation in 2012.

The MET provides type specific IMO Model ECDIS training courses with state-of-the-art environment for up to 12 participants simultaneously.

The INTERSCHALT ECDIS training qualifies the crew

- Pass Port State Controls
- Assess displayed ECDIS information correctly
- Conduct chart installations and updates properly
- Interpret legal standards
- Recognize and solve malfunctions
- Avoid misinterpretation



Be prepared for ECDIS

- Navigate paperless and safely
- Be trained on type specific ECDIS software and simulation environment
- Benefit by high qualified and experienced trainers



INTERSCHALT maritime systems AG

Osterbrooksweg 42, 22869 Schenefeld, GERMANY

phone: +49 (0)40 83033-220 • fax: +49 (0)40 83033-224

email: training@interschalt.de • web: www.interschalt.de

