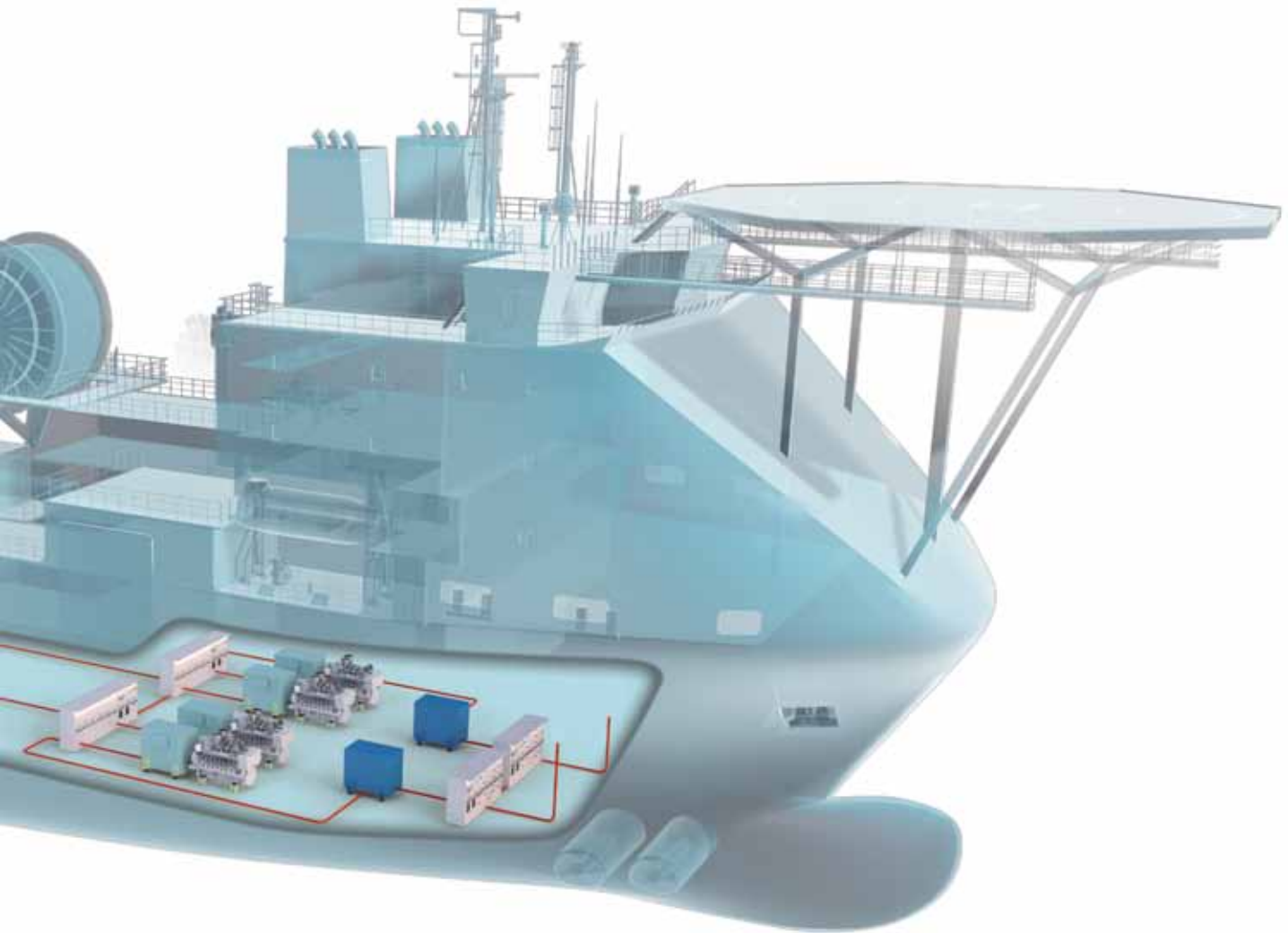


Power Distribution & Control

Diesel-electric propulsion



||S interschalt Power Distribution & Control

Stable propulsion and board network in all operation conditions

Flexible use of asynchronous generators and consumers

High redundancy

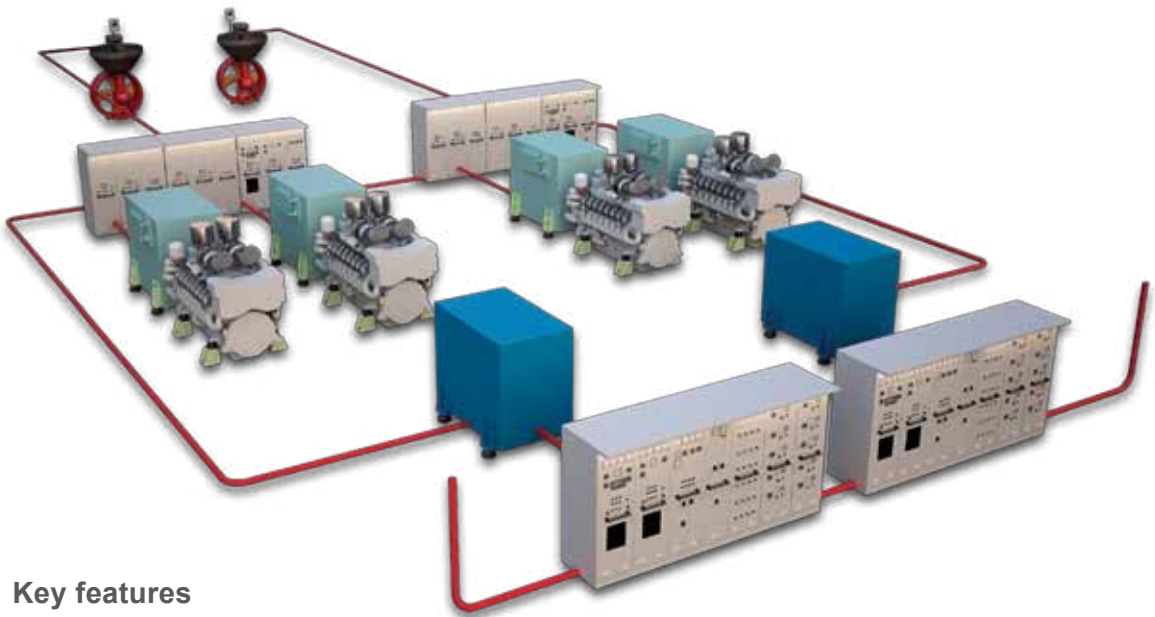
Fewer components and less complex wiring

Low-voltage-technology with high power performance

GREEN POWER for diesel-electric propulsion

INTERSCHALT maritime systems AG as leading supplier for power distribution and control solutions has long experiences in fitting seagoing vessels with complete electrical systems including integrated automation systems. INTERSCHALT launched the innovative diesel-electric propulsion system GREEN POWER using exclusively the concept of e-powered marine solutions GmbH & Co.KG. The system comprises a high electrical drive power and a new electrical propulsion concept in low voltage technology.

Especially for ships with a high electrical propulsion power compared to the board network power and a limited space for propulsion equipment, the system GREEN POWER provides safe energy distribution with standard industrial drive components.



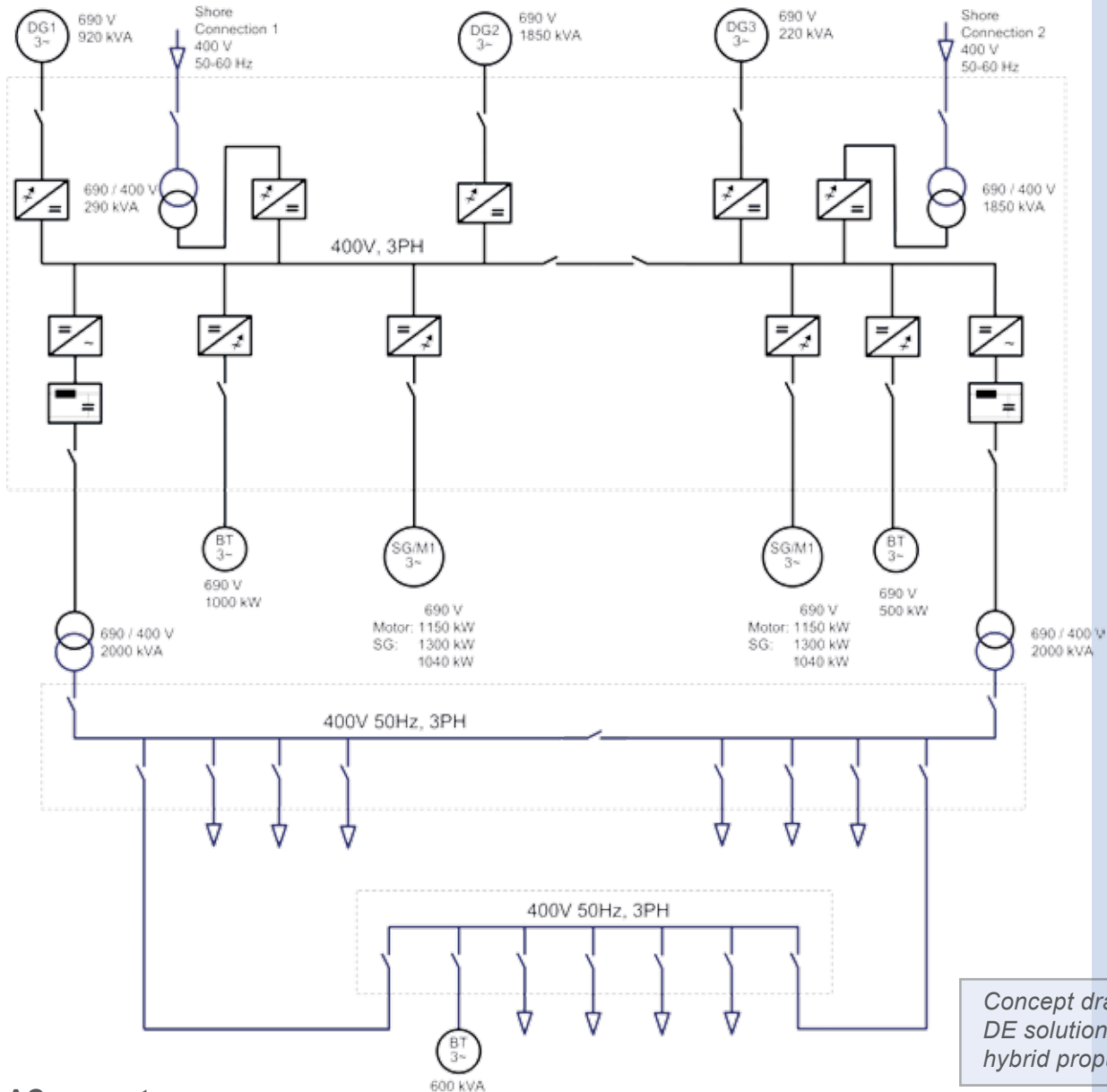
Key features

- Common DC energy bus
- Safe board network configuration
- High redundancy without additional components
- Fully integrated power management system
- High electrical power at low voltage technology
- Very short synchronisation time

Customer benefits

- High energy efficiency
- Engine operation in optimal way regarding fuel consumption and power output
- Usage of standard industrial components and asynchronous generators
- Less initial investment
- Less space required on board

Key technical data



AC generator

The DC board system comprises products such as AC generators, inverter modules or AC motors, which are already in use on modern vessels. There is no use of AC main switchboards and transformers.

This system enables the vessel motors to run in an optimized mode regarding fuel consumption and power output.

Frequency converter

An efficient inverter concept for a space saving and redundant ship propulsion and a common DC-bus in combination with (a)synchronous generators, provides high and scalable power to adapt consumption.

Compared to conventional systems, the innovative diesel-electric propulsion system shows high stability which enables to integrate large consumers easily. To switch large pumps and compressors on and off, no specific measures are necessary. All other consumers run stable at all conditions.

INTERSCHALT maritime systems AG

Osterbrooksweg 42, 22869 Schenefeld GERMANY

phone: +49 (0)40 83033-0 • fax: +49 (0)40 8302617

email: sales@interschalt.de • web: www.interschalt.de

