

# STOWMAN

## Stowage Planning System



# **seacos** Stowage Planning

*Wide range of information per item  
Items can be colored according to  
a variety of criteria*

*Hatch cover handling*

*Extensive reporting facilities*

*Data import and export from  
centralized database or file-based*

*Cargo handling*

*Crane split*

*Visualization*

*Checks*

**STOWMAN** is innovative software for terminals and shipping lines that provide the handling and storage of containerized and general cargo. STOWMAN manages the planning process of efficient loading, discharge and shifting/restow. It also checks the arrival, discharge and intermediate loading conditions of container and multi-purpose vessels at terminals respective the planned departure conditions of the vessels for each port call.

## **Cargo Handling**

- **Terminals:** Arrival, departure, preplan, real-time and simulation loading conditions are handled independently
- **Shipping Lines:** Voyage forecast planning
- Stowage instructions with clear graphical presentation (Preplan)
- Symbolic presentation of the pier
- Drag-and-drop planning for single pier containers and optimized area planning with stowage checks
- Terminals: Automatic stowage suggestion, taking the maximum permitted stack into account weights and the segregation rules for dangerous cargo; based on stowage instructions or performed for selected containers
- Weight groups definition
- Distinction between restower (over pier) and shifter; input of final position, custom restower
- Variable container sizes - both old and new ISO, as well as custom types
- Wide range of information per cargo unit: type, weight, port of loading/discharge, operator, non-dangerous and dangerous goods, overdimensions, handling instructions, etc.
- Port rotation with date/time and quay

## **Import and export**

- BAPLIE 1.5, 2.0 and 2.1
- MOVINS, COPRAR, COARRI
- Terminals: Online interface to Terminal Management System
- Container data exchange via text files, e.g. Excel Comma Separated-Values (CSV) format

## **Visualization**

- Single-, twin-, plan- and total bay views
- Containers can be colored and marked according to several criteria (e.g. by port of discharge, IMDG class, etc); multiple colors per container
- Loading, discharge and restow lists
- Hatch covers and tweendecks
- Longitudinal section and top view with tanks, holds, containers and visibility lines
- 3D-view based on hull data
- Screen and print reports in PDF, HTML and XML formats

## Checks

All-in-one condition check: exceeding stack weights, reefers at non-reefer positions, flying containers, dangerous goods check, hatch cover clearance, UN Locode, types and overdimensions, handling instructions and container serial numbers.



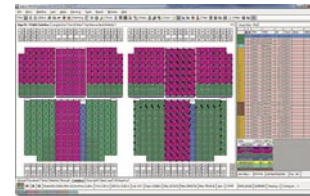
## Crane Split

- Individual color, performance and geometry settings for each crane
- Worksequence by bay or baygroup
- Several working strategies (stack or tierwise, start from berthing or water side) to define order of container handling operations
- Graphical and tabular presentation
- Working plan per crane
- Check for crane space conflict and overweight
- Twin/tandem moves
- Automatically calculated handling time for each container based on predefined crane performance
- Simultaneous usage of terminal and ship cranes is possible

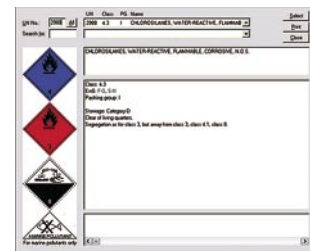


## Basic program MACS.3net for stability and strength

The MACS3 module enhances the STOWMAN system with fast and easy stability and strength calculation features, covering all pertinent international regulations like e.g. IMO A.749.



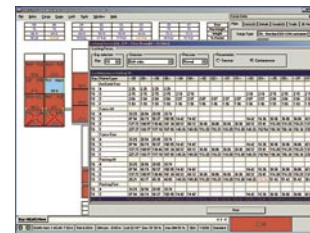
**MIXCARGO for general cargo** provides the visual solution for managing all kinds of cargo: containers, trailers, break bulk and homogeneous surface cargo.



**DAGO** manages dangerous goods. It checks the fulfillment of the stowage and segregation requirements imposed by the latest amendment of the IMDG Code.

- Multiple dangerous goods per cargo unit
- Segregation checks, based on UN Number

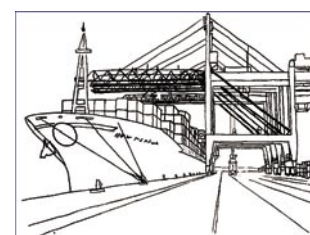
**SEALASH** including Lash Optimization lashes containers properly. Forces are calculated according to GL, DNV, BV, ABS and LR. Generates various reports, e.g. inventory list, lash forces by bay, stack and tier. Lashings can automatically be applied according to the Cargo Securing Manual.



## VSD<sup>32</sup>

The visual ship data system supports the input of ship data for the STOWMAN system and its modules.

VSD<sup>32</sup> consists of the user interface, a database and a help system. Any database, e.g. MS Access, can be used. An unlimited number of vessels can be created in the database. More than 4,900 predefined vessel profiles are already in our database.



**INTERSCHALT maritime systems AG**

Wilhelmstrasse 7-9, 24937 Flensburg, GERMANY

phone: +49 (0)461 43041-0 • fax: +49 (0)461 43041-499

email: [sales@interschalt.de](mailto:sales@interschalt.de) • web: [www.interschalt.de](http://www.interschalt.de)

